

PLUMBING SPECIFICATIONS:

- 1.1 THE ARCHITECTURAL GENERAL CONDITIONS SHALL APPLY TO AND FORM A PART OF THIS SECTION OF THESE SPECIFICATION.
- 1.2 PROVIDE ALL MATERIALS, LABOR, EQUIPMENT, TOOLS AND SUPERVISION AND PERFORM ALL OPERATIONS NECESSARY FOR THE PROPER AND COMPLETE EXECUTION OF ALL PLUMBING WORK IN STRICT ACCORDANCE WITH THE SPECIFICATIONS AND DRAWINGS.
- 1.3 ALL WORK SHALL BE IN ACCORDANCE WITH ALL APPLICABLE SECTIONS OF THE NEW YORK BUILDING AND PLUMBING CODES, NATIONAL FIRE PROTECTION ASSOCIATION, NATIONAL ELECTRIC CODE, OSHA, ALL OTHER STATE AND LOCAL AUTHORITIES HAVING JURISDICTION AND APPLICABLE MANUFACTURER'S RECOMMENDATIONS.
- 1.4 THE CONTRACTOR SHALL VISIT THE SITE, EXAMINE ALL CONDITIONS, AND MAKE ALLOWANCES FOR DIFFICULTIES AND CONTINGENCIES AFFECTING THE PROPER EXECUTION OF THIS CONTRACT.
- 1.5 THE CONTRACTOR SHALL OBTAIN AND PAY ALL FEES NECESSARY FOR PERMITS AND INSPECTIONS REQUIRED WITH THIS WORK.
- 1.6 THE CONTRACTOR SHALL VERIFY ALL UTILITY SERVICE INFORMATION SHOWN ON THE DRAWINGS WITH THE LOCAL UTILITY COMPANY PRIOR TO SUBMITTING A BID. ANY CHANGES OR SERVICE CHARGES IMPOSED BY THE UTILITY COMPANY SHALL BE QUALIFIED AND INCLUDED IN THE BID.
- 1.7 ALL EQUIPMENT SHALL BE TESTED, LISTED AND LABELED BY AN APPROVED AUTHORITY (UL, AGA, ETL) AND SHALL BE INSTALLED IN ACCORDANCE WITH ITS LISTING.
- 1.8 ALL EQUIPMENT, MATERIALS, AND WORKMANSHIP SHALL BE GUARANTEED FOR A MINIMUM OF ONE YEAR FROM THE DATE OF ACCEPTANCE BY THE OWNER.
- 1.9 WHERE PRODUCTS ARE SPECIFIED BY BRAND NAME, CATALOG NUMBERS OR BY NAMES OF MANUFACTURERS, THE REFERENCE IS INTENDED TO BE DESCRIPTIVE AND NOT RESTRICTIVE AND IS SOLELY FOR THE PURPOSE OF INDICATING THE TYPE OF QUALITY OF ITEM THAT WILL BE ACCEPTABLE. AN APPROVED EQUAL WILL BE CONSIDERED UNLESS INDICATED OTHERWISE.
- 1.10 SUBMIT SHOP DRAWINGS REVIEW AND APPROVAL PRIOR TO ORDERING ANY MATERIALS OR EQUIPMENT.
- 1.11 THE CONTRACTOR RESPONSIBLE FOR WORK COVERED BY THESE SPECIFICATIONS SHALL COORDINATE AND COOPERATE WITH ALL OTHER TRADES. TRADES THAT HAVE WORK CONNECTED WITH THE PLUMBING WORK SHALL BE NOTIFIED FOR INSTALLATION REQUIREMENTS AND SCHEDULING. THE CONTRACTOR SHALL SCHEDULE HIS WORK TO AVOID ANY INTERRUPTION OF ANY UTILITY SERVICES TO THE OPERATION AREAS OF THE BUILDING DURING NORMAL WORKING HOURS. INTERRUPTION OF SERVICES SHALL BE DONE DURING OFF HOURS AT NO ADDITIONAL COST TO THE OWNER.
- 1.12 ALL CUTTING AND PATCHING OF EVERY NATURE REQUIRED IN CONNECTION WITH THIS CONTRACT SHALL BE DONE BY THIS CONTRACTOR WITH MECHANICS EXPERIENCED IN THEIR RESPECTIVE TRADES. ALL PATCHING SHALL MATCH ADJACENT FINISHES. ALL WORK SHALL BE COORDINATED TO AVOID CUTTING OF WORK IN PLACE AND INTERFERING WITH OTHER OPERATIONS.
- 1.13 IN COMPLIANCE WITH ACT 38, CONTACT INDIVIDUAL COMPANIES TO HAVE UTILITY LOCATIONS MARKED IN THE FIELD AND TO OTHERWISE LOCATE UNDERGROUND OBJECTS AS MAY BE NECESSARY PRIOR TO THE START OF CONSTRUCTION. CALL DIG SAFELY NEW YORK, INC. ONE CALL (1-800-962-7962, AS OF THIS WRITING).
- 1.14 ALL EXCAVATIONS REQUIRED FOR INSTALLATION OF PIPE SHALL HAVE SOLID, UNDISTURBED BOTTOMS, AND SHALL BE SUBJECT TO APPROVAL BY THE OWNER'S REPRESENTATIVE. PRIOR TO PIPING PLACEMENT, SHOULD BOTTOMS BECOME SOFT OR WET BEFORE PIPING IS PLACED, ALL SUCH UNSUITABLE BOTTOMS SHALL BE REMOVED AT NO COST TO THE OWNER AND FILLED WITH CONCRETE.
- 1.15 BACKFILL ALL EXCAVATIONS PERFORMED UNDER THIS CONTRACT AS REQUIRED TO SATISFY FINISHED GRADE REQUIREMENTS.

- 1.16 FURNISH AND INSTALL ALL NECESSARY HANGERS, INSERTS, SUPPORTS SUPPLEMENTARY STEEL, ETC., TO PROPERLY SUPPORT ALL EQUIPMENT AND PIPING IN AN APPROVED MANNER AND IN FULL ACCORDANCE WITH THE MANUFACTURER'S RECOMMENDATIONS.
- 1.17 ALL DOMESTIC COLD WATER PIPING WITHIN THE BUILDING SHALL BE HARD DRAWN TYPE 1" COPPER TUBING IN ACCORDANCE WITH ASTM-B88. FITTINGS SHALL BE WROUGHT COPPER OR CAST BRASS. VALVES SHALL BE CAST BRASS UNLESS NOTED OTHERWISE. HANGERS FOR SUPPORTING COPPER TUBING SHALL BE COPPERIZED. HANGER SPACING SHALL BE MAXIMUM OF 6 FEET HORIZONTAL FOR SIZES 1-1/4" AND LESS, 10 FEET HORIZONTAL FOR SIZES 1-1/2" AND GREATER AND 10 FEET VERTICAL FOR ALL SIZES IN ACCORDANCE WITH THE MANUFACTURERS INSTALLATION INSTRUCTIONS AND PLUMBING CODE.
- A. WHERE INDICATED ON THE DRAWINGS, ALTERNATIVE MATERIAL OF CONSTRUCTION FOR DOMESTIC WATER PIPING SHALL BE SCHEDULE 40 OR SCHEDULE 80, CHLORINATED POLYVINYL CHLORIDE (CPVC) PIPE CONFORMING TO NSF61, IN ACCORDANCE WITH ASTM F441. FITTINGS SHALL BE APPROVED FOR INSTALLATION WITH THE PIPING MATERIAL IN ACCORDANCE WITH ASTM F437, F438, F439 OR F441. JOINTS SHALL BE IN ACCORDANCE WITH THE MANUFACTURERS INSTALLATION INSTRUCTIONS, ASTM D2846, ASTM F493. CPVC PIPE SHALL NOT BE USED WITHOUT WRITTEN AUTHORIZATION FROM THE AUTHORITY HAVING JURISDICTION AND THE LOCAL FIRE MARSHAL. PIPING SHALL MEET UL 84E SMOKE AND FLAME SPREAD RATINGS FOR USE IN RETURN AIR PLENUM CEILINGS OR FIRE-RATED CEILING ASSEMBLIES. INSTALLATION OF THE CPVC PIPING MATERIAL SHALL INCLUDE APPROPRIATE PIPING SUPPORTS AND HANGER SPACING (MAXIMUM OF 6 FEET) IN ACCORDANCE WITH THE MANUFACTURERS INSTALLATION INSTRUCTIONS AND PLUMBING CODE.
1. B. EMERGENCY (SECONDARY) ROOF DRAINS (OD); ANSI A112.21.2; LACQUERED CAST IRON BODY WITH SUMP RECEIVER, REMOVABLE CAST IRON DOME STRAINER, MEMBRANE FLANGE AND MEMBRANE CLAMP WITH INTEGRAL GRAVEL STOP, WITH ADJUSTABLE UNDERDECK CLAMP, ADJUSTABLE EXTENSION SLEEVE FOR INSULATION, TWO INCH WATER DAM, OUTLET SIZE TO MATCH PIPE SIZE INDICATED ON THE DRAWINGS; MODEL Z100-W2, MANUFACTURED BY ZURN.
- 1.23 ALL SHUTOFF VALVES SHALL BE BALL VALVES. ALL BALL AND CHECK VALVES SHALL BE ALL BRONZE, SWEATED PATTERN SUITABLE FOR 125-PSI WORKING PRESSURE.
- 1.24 ALL BACKFLOW PREVENTERS SHALL BE AS REQUIRED BY THE LOCAL AUTHORITY.
- A. REDUCED PRESSURE BACKFLOW PREVENTERS: ANSI/ASSE 1013; BRONZE BODY WITH BRONZE AND PLASTIC INTERNAL PARTS AND STAINLESS STEEL SPRINGS; TWO INDEPENDENTLY OPERATING, SPRING LOADED CHECK VALVES; DIAPHRAGM TYPE DIFFERENTIAL PRESSURE RELIEF VALVE LOCATED BETWEEN CHECK VALVES; THIRD CHECK VALVE WHICH OPENS UNDER BACK PRESSURE IN CASE OF DIAPHRAGM FAILURE; NON-THREADED VENT OUTLET; ASSEMBLED WITH TWO GATE VALVES, STRAINER AND FOUR TEST COCKS; MODEL 90S, MANUFACTURED BY WATTS. BACKFLOW PREVENTER SHALL BE INSTALLED WITH AN AIR GAP DRAIN ASSEMBLY, WATTS MODEL 909AG. EXTEND DRAIN LINE TO NEAREST FLOOR DRAIN.
- 1.25 INSULATION
- A. INSTALL INSULATION ON ALL COLD-WATER PIPING, ROOF DRAIN BODIES (SUMPS), HORIZONTAL STORM WATER PIPING, FITTINGS, VALVES AND STRAINERS WITH MATERIALS HAVING A "K" FACTOR OF 0.27 AT 75 DEGREES F MEAN TEMPERATURE, A FLAME SPREAD RATING OF 25 OR LESS AND SMOKE DEVELOPED RATING OF 50 OR LESS.
- B. ALL INSULATION SHALL COMPLY WITH THE REQUIREMENTS OF ASTM E-84. ALL INSULATION SHALL BE CONTINUOUS AT HANGERS AND SUPPORTS (THE PIPE SHALL NOT CONTACT THE HANGER OR SUPPORT) EXCEPT WHERE PIPE ANCHORS AND GUIDES ARE INSTALLED. AT THESE LOCATIONS, COMPLETELY INSULATE THE ANCHOR AND/OR GUIDE BACK TO A DISTANCE THAT IS AT LEAST FOUR PIPE DIAMETERS OF THE PIPE. PROVIDE INSULATION SHIELDS ON ALL WATER SUPPLY DISTRIBUTION MAINS TO KEEP THE INSULATION FROM COMPRESSING SIGNIFICANTLY UNDER THE WEIGHT OF THE PIPE.
1. THICKNESS:
- COLD WATER PIPE SIZES UP TO 1 INCH = 1/2-INCH THICK
- COLD WATER PIPE SIZES FROM 1-1/4 TO 2 INCHES = 3/4-INCH THICK
- COLD WATER PIPE SIZES 2-1/2 INCHES AND LARGER = ONE INCH THICK

- 1.21 INSTALL CLEANOUT FITTINGS WHERE INDICATED AND AS REQUIRED. CLEANOUTS SHALL BE MADE BY MEANS OF LONG SWEEP ELL OR Y AND BEND. CLEANOUTS SHALL BE THE SAME SIZE AS PIPING UP TO AND INCLUDING 4-INCH LINE SIZE, AND IN 6 INCH LINE SIZE OR ABOVE CLEANOUTS SHALL BE 4 INCH. CLEANOUTS IN FLOORS FOR CONCEALED PIPING SHALL BE ADJUSTABLE GALVANIZED CAST IRON BODY WITH ABS PLUG (GASKET SEAL), EXTRA HEAVY-DUTY SCORATED CAST IRON TOP WITH VANDALPROOF SCREWS AND FLANGE WITH FLASHING CLAMP. FLOOR CLEANOUTS SHALL BE JAY R. SMITH SERIES 4220S OR 4223S, RATED FOR HEAVY LOAD TRAFFIC. CLEANOUTS IN WALLS FOR CONCEALED PIPING SHALL BE CAST IRON T BRANCH CLEANOUT WITH BRONZE RAISED HEAD PLUG, LEAD SEAL AND VANDALPROOF POLISHED STAINLESS-STEEL ROUND ACCESS COVER.
- 1.22 ROOF DRAINS
- A. PRIMARY ROOF DRAINS (RD); ANSI A112.21.2; LACQUERED CAST IRON BODY WITH SUMP RECEIVER, REMOVABLE CAST IRON DOME STRAINER, MEMBRANE FLANGE AND MEMBRANE CLAMP WITH INTEGRAL GRAVEL STOP, WITH ADJUSTABLE UNDERDECK CLAMP, ADJUSTABLE EXTENSION SLEEVE FOR INSULATION, OUTLET SIZE TO MATCH PIPE SIZE INDICATED ON THE DRAWINGS; MODEL Z100, MANUFACTURED BY ZURN.
- B. EMERGENCY (SECONDARY) ROOF DRAINS (OD); ANSI A112.21.2; LACQUERED CAST IRON BODY WITH SUMP RECEIVER, REMOVABLE CAST IRON DOME STRAINER, MEMBRANE FLANGE AND MEMBRANE CLAMP WITH INTEGRAL GRAVEL STOP, WITH ADJUSTABLE UNDERDECK CLAMP, ADJUSTABLE EXTENSION SLEEVE FOR INSULATION, TWO INCH WATER DAM, OUTLET SIZE TO MATCH PIPE SIZE INDICATED ON THE DRAWINGS; MODEL Z100-W2, MANUFACTURED BY ZURN.
- 1.23 ALL SHUTOFF VALVES SHALL BE BALL VALVES. ALL BALL AND CHECK VALVES SHALL BE ALL BRONZE, SWEATED PATTERN SUITABLE FOR 125-PSI WORKING PRESSURE.
- 1.24 ALL BACKFLOW PREVENTERS SHALL BE AS REQUIRED BY THE LOCAL AUTHORITY.
- A. REDUCED PRESSURE BACKFLOW PREVENTERS: ANSI/ASSE 1013; BRONZE BODY WITH BRONZE AND PLASTIC INTERNAL PARTS AND STAINLESS STEEL SPRINGS; TWO INDEPENDENTLY OPERATING, SPRING LOADED CHECK VALVES; DIAPHRAGM TYPE DIFFERENTIAL PRESSURE RELIEF VALVE LOCATED BETWEEN CHECK VALVES; THIRD CHECK VALVE WHICH OPENS UNDER BACK PRESSURE IN CASE OF DIAPHRAGM FAILURE; NON-THREADED VENT OUTLET; ASSEMBLED WITH TWO GATE VALVES, STRAINER AND FOUR TEST COCKS; MODEL 90S, MANUFACTURED BY WATTS. BACKFLOW PREVENTER SHALL BE INSTALLED WITH AN AIR GAP DRAIN ASSEMBLY, WATTS MODEL 909AG. EXTEND DRAIN LINE TO NEAREST FLOOR DRAIN.
- 1.25 INSULATION
- A. INSTALL INSULATION ON ALL COLD-WATER PIPING, ROOF DRAIN BODIES (SUMPS), HORIZONTAL STORM WATER PIPING, FITTINGS, VALVES AND STRAINERS WITH MATERIALS HAVING A "K" FACTOR OF 0.27 AT 75 DEGREES F MEAN TEMPERATURE, A FLAME SPREAD RATING OF 25 OR LESS AND SMOKE DEVELOPED RATING OF 50 OR LESS.
- B. ALL INSULATION SHALL COMPLY WITH THE REQUIREMENTS OF ASTM E-84. ALL INSULATION SHALL BE CONTINUOUS AT HANGERS AND SUPPORTS (THE PIPE SHALL NOT CONTACT THE HANGER OR SUPPORT) EXCEPT WHERE PIPE ANCHORS AND GUIDES ARE INSTALLED. AT THESE LOCATIONS, COMPLETELY INSULATE THE ANCHOR AND/OR GUIDE BACK TO A DISTANCE THAT IS AT LEAST FOUR PIPE DIAMETERS OF THE PIPE. PROVIDE INSULATION SHIELDS ON ALL WATER SUPPLY DISTRIBUTION MAINS TO KEEP THE INSULATION FROM COMPRESSING SIGNIFICANTLY UNDER THE WEIGHT OF THE PIPE.
1. THICKNESS:
- COLD WATER PIPE SIZES UP TO 1 INCH = 1/2-INCH THICK
- COLD WATER PIPE SIZES FROM 1-1/4 TO 2 INCHES = 3/4-INCH THICK
- COLD WATER PIPE SIZES 2-1/2 INCHES AND LARGER = ONE INCH THICK

- HORIZONTAL STORM WATER = 1/2 INCH THICK
- ROOF DRAIN BODIES (SUMPS) = 1/2 INCH THICK

2. MATERIALS:

- VAPOR BARRIER ALL SERVICE JACKETED FIBERGLASS WITH FITTINGS COVERED WITH PRE-SHAPED PLASTIC COVERS.
3. MANUFACTURERS - CERTAINTED, MANVILLE, OWENS CORNING, KNAUF, ARMSTRONG OR APPROVED EQUAL

1.29 TEST OF DRAINAGE SYSTEMS

- A. PROVIDE TRAP SEALING COMPONENT AT ALL FLOOR DRAINS AND FUNNEL DRAINS. THE INSTALLATION OF A SEALING COMPONENT ON THE FIXTURE DRAIN OUTLET TO REDUCE TRAP SEAL LOSS SHALL BE PERMITTED IN LIEU OF A TRAP PRIMER WHERE APPROVED BY THE LOCAL AUTHORITY.
- B. TRAP SEALING COMPONENT SHALL BE PROSET TRAP GUARD, MANUFACTURED BY PROSET SYSTEMS. INSTALL IN ACCORDANCE WITH MANUFACTURER'S INSTRUCTIONS.

- 1.27 FIXTURES AND FIXTURE TRIMMINGS SHALL BE FURNISHED AND INSTALLED AS SPECIFIED HEREIN. FIXTURES SHALL BE COMPLETE WITH ALL NECESSARY WALL HANGERS AND SUPPORTS, SUPPLY STOP VALVES (LOOSE-KEY STOPS FOR EXPOSED PIPING IN PUBLIC TOILET ROOMS), 17-GAUGE CHROME-PLATED BRASS DRAINAGE FITTINGS/P-TRAPS AND ONE-PIECE CHROME-PLATED ESCUTOCHONS. ALL PIPING EXPOSED TO VIEW SHALL BE CHROME-PLATED BRASS. THE FOLLOWING ITEM NUMBERS CORRESPOND WITH THE "P" NUMBERS NOTED ON THE PLUMBING FIXTURE SCHEDULE AND ON THE DRAWINGS.

P-1 FLOOR DRAIN, ASME A112.6.3. - TWELVE INCH ROUND STRAINER HEAVY DUTY DRAIN WITH CAST IRON TRACTOR GRATE, DUCCO CAST IRON DEEP BODY AND FLASHING COLLAR AND A FOUR INCH BOTTOM OUTLET; MODEL 2141Y, MANUFACTURED BY JAY R. SMITH MFG. CO.

P-2 WALL HYDRANT - SHALL BE ZURN MODEL Z-1310; EXPOSED, NON-FREEZE HYDRANT WITH STAINLESS STEEL FACE AND LOOSE KEY OPERATOR.

1.28 STERILIZATION OF DOMESTIC WATER SYSTEM

- A. BEFORE BEING PLACED IN SERVICE, ALL DOMESTIC WATER LINES SHALL BE CHLORINATED USING A METHOD THAT IS SATISFACTORY TO THE WATER AUTHORITY OR THE AUTHORITY HAVING JURISDICTION. IN THE ABSENCE OF A PRESCRIBED METHOD, THE PROCEDURE LISTED IN AWWA C651 OR AWWA C652 OR AS DESCRIBED BELOW SHALL BE USED.
- B. PRIOR TO CHLORINATION, ALL DIRT AND FOREIGN MATTER SHALL BE REMOVED BY A THOROUGH FLUSHING. THIS SHALL BE DONE AFTER THE PRESSURE TEST AND LEAKAGE TEST.
- C. A CHLORINE HYPOCHLORITE SOLUTION SHALL BE APPLIED BY MEANS OF A SOLUTION FEED DEVICE OR THE CHLORINE SHALL BE FED DIRECTLY FROM A CHLORINE CYLINDER EQUIPPED WITH PROPER DEVICES FOR REGULATING THE RATE OF FLOW AND THE EFFECTIVE DIFFUSE OF GAS WITHIN THE PIPE.
- D. WATER SHALL BE CONTROLLED TO FLOW SLOWLY INTO THE SYSTEM DURING THE APPLICATION OF CHLORINE IN SUCH PROPORTIONS THAT THE CHLORINE DOSE APPLIED TO THE WATER ENTERING THE PIPE SHALL BE AT LEAST 50 PARTS PER MILLION.
- E. TREATED WATER SHALL BE RETAINED IN THE SYSTEM LONG ENOUGH TO DESTROY ALL NON-SPORE FORMING BACTERIA. THIS PERIOD SHALL BE AT LEAST TWENTY-FOUR HOURS. A LONGER CHLORINE CONTACT TIME MAY BE REQUESTED BY THE OWNER'S REPRESENTATIVE AT NO ADDITIONAL COST TO THE OWNER.
- F. AFTER THE CHLORINE TREATED WATER HAS BEEN RETAINED FOR THE REQUIRED TIME, THE CHLORINE RESIDUAL AT THE PIPE EXTREMITIES AND AT OTHER REPRESENTATIVE POINTS SHALL BE AT LEAST FIVE PARTS PER MILLIONS.

- G. FOLLOWING CHLORINATION, ALL TREATED WATER SHALL BE THOROUGHLY FLUSHED FROM THE SYSTEM AT ITS EXTREMITIES UNTIL THE REPLACEMENT WATER THROUGHOUT ITS LENGTH SHALL, UPON TEST, BE EQUAL TO THE WATER QUALITY SERVED FROM THE WATER SUPPLY SYSTEM.

- H. SHOULD THE INITIAL TREATMENT IN THE OPINION OF THE OWNER'S REPRESENTATIVE PROVE INEFFECTIVE, THE CHLORINATION PROCEDURE SHALL BE REPEATED UNTIL CONFIRMED TESTS SHOW THAT WATER SAMPLED FROM THE SYSTEM CONFORMS TO THE REQUIREMENTS.

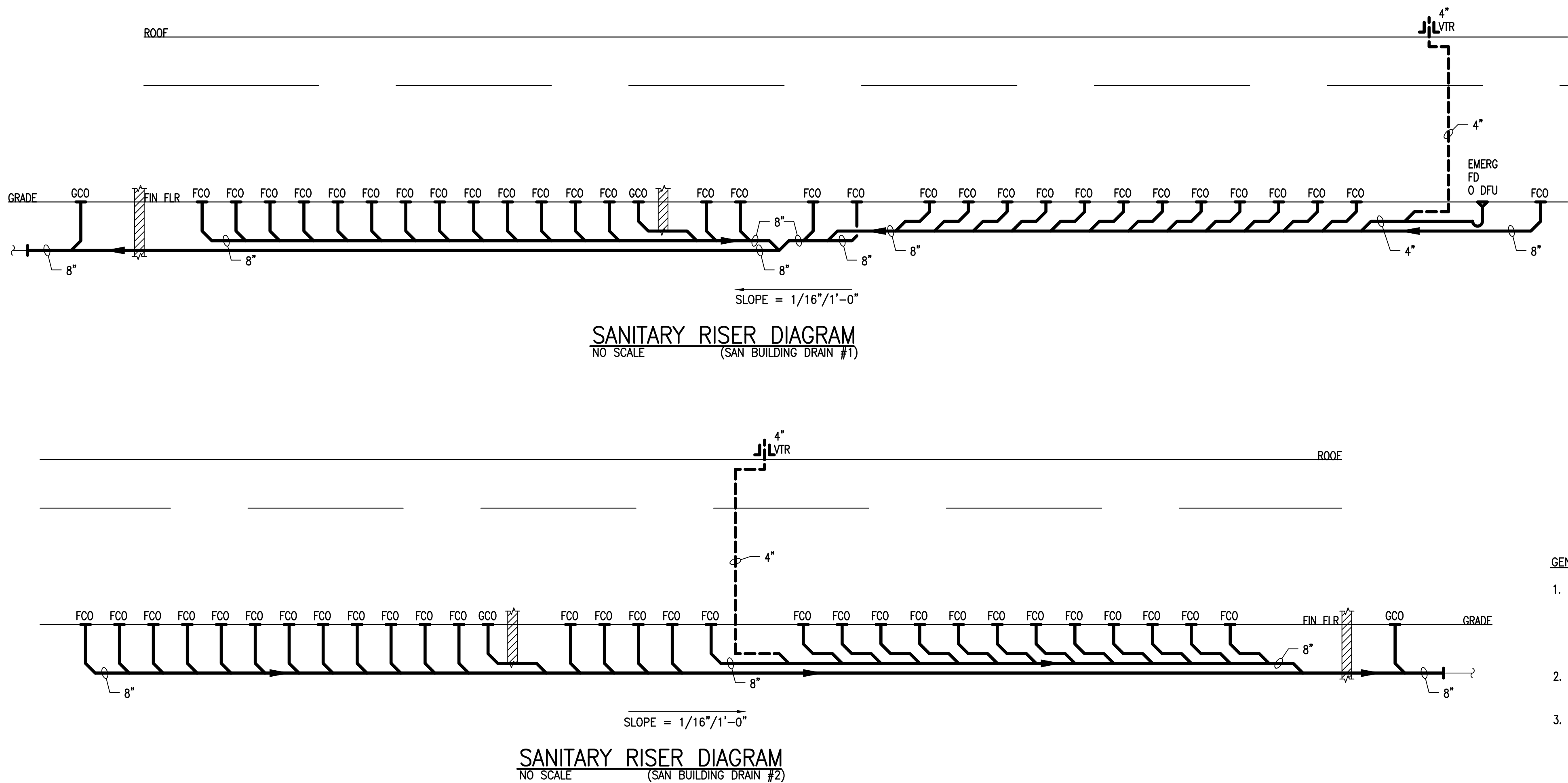
1.30 TEST OF DOMESTIC WATER PIPING

- A. ALL SANITARY AND STORM WATER DRAINAGE PIPING SHALL BE TESTED BY PLUGGING ALL OPENINGS AND FILLING SYSTEM WITH WATER TO NO LESS THAN TEN (10) FOOT HEAD OF WATER. THE WATER SHALL STAND FOR 30 MINUTES BEFORE INSPECTION STARTS; THE SYSTEM SHALL BE TIGHT AT ALL POINTS. ANY ADDITIONAL TESTING BY AIR, SMOKE OR PEPPERMINT SHALL COMPLY WITH LOCAL AUTHORITY REQUIREMENTS.

1.31 TESTING OF BACKFLOW PREVENTION ASSEMBLIES

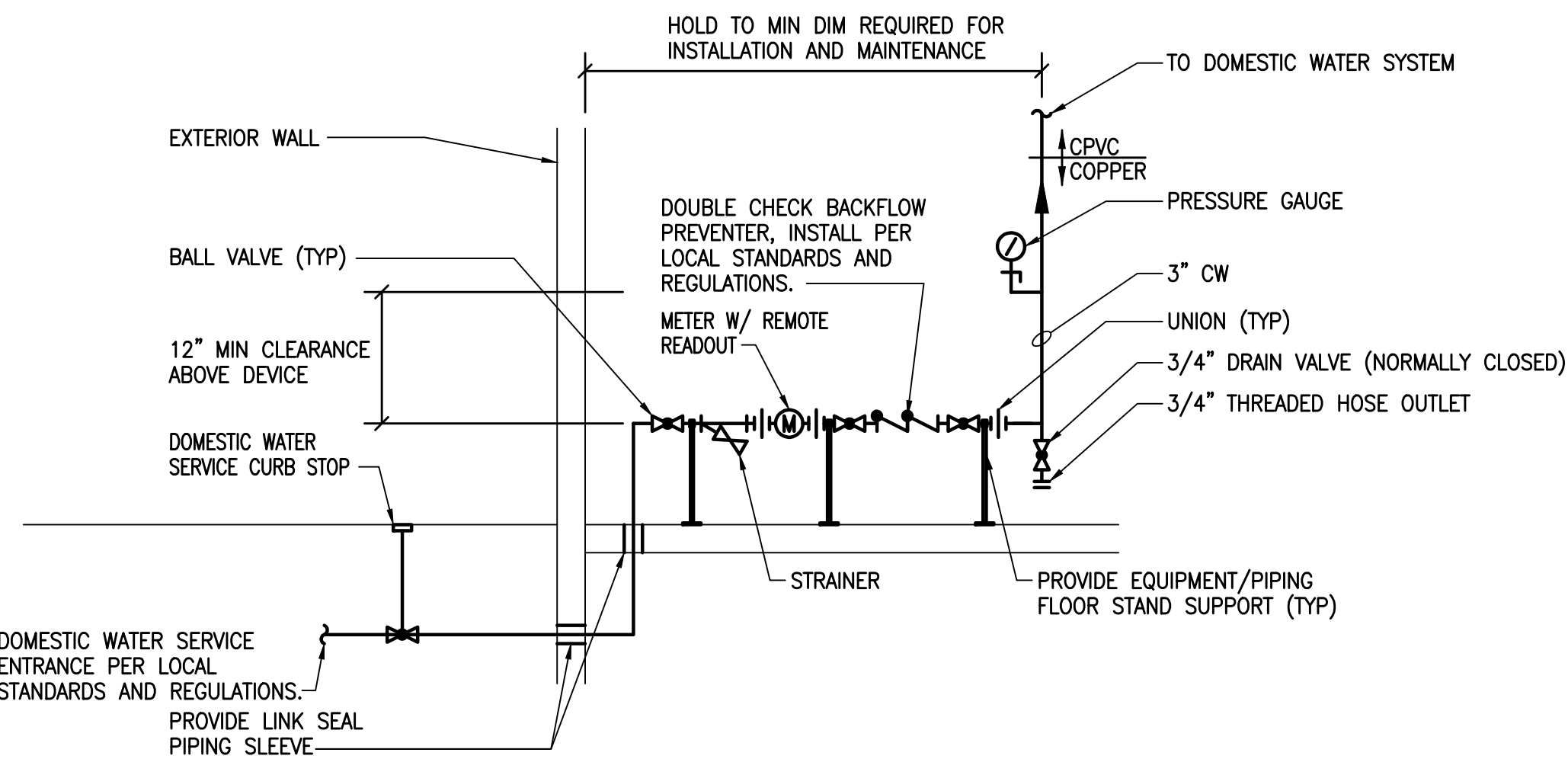
- A. PROVIDE TEST AT THE TIME OF INSTALLATION AND IMMEDIATELY AFTER REPAIRS AND OR RELOCATION FOR THE FOLLOWING: REDUCED PRESSURE PRINCIPLE BACKFLOW PREVENTER ASSEMBLIES, DOUBLE CHECK-VALVE ASSEMBLIES, PRESSURE VACUUM BREAKER ASSEMBLIES, REDUCED PRESSURE DETECTOR FIRE PROTECTION BACKFLOW PREVENTION ASSEMBLIES, DOUBLE CHECK DETECTOR FIRE PROTECTION BACKFLOW PREVENTION ASSEMBLIES, GROSS CONNECTION BACKFLOW PREVENTERS AND SPILLPROOF VACUUM BREAKERS.
1. CERTIFIED INDIVIDUALS APPROVED BY AN AGENCY ACCEPTABLE TO THE AUTHORITY HAVING JURISDICTION SHALL PERFORM TESTING AND REPAIR OF DEVICES. TESTER QUALIFICATIONS SHALL BE IN ACCORDANCE WITH ASSE 5000 SERIES STANDARDS OR EQUIVALENT. CERTIFICATION FOR REPAIR SHALL BE IN ACCORDANCE WITH ASSE 5030 OR EQUIVALENT. CERTIFICATION SHALL INCLUDE NOT LESS THAN 32 HOURS OF COMBINED CLASSROOM AND PRACTICE TRAINING AND SUCCESSFUL COMPLETION OF A WRITTEN AND PRACTICAL EXAMINATION.
2. PERFORM TESTING PROCEDURES IN ACCORDANCE WITH ONE OF THE FOLLOWING STANDARDS: ASSE 5013, ASSE 5015, ASSE 5020, ASSE 5013, ASSE 5047, ASSE 5048, ASSE 5052, ASSE 5056, CSA B64.10 OR CSA B64.10.1.
- B. WHERE TESTS INDICATE THAT THE DEVICE IS NOT FUNCTIONING PROPERLY, IT SHALL BE SERVICED OR REPAIRED IN ACCORDANCE WITH THE MANUFACTURER'S INSTRUCTIONS AND BE RETESTED.
- C. COPIES OF TEST REPORTS FOR THE INITIAL INSTALLATION SHALL BE SENT TO THE OWNER, AUTHORITY HAVING JURISDICTION AND TO THE WATER SUPPLIER.
- D. THE OWNER IS RESPONSIBLE FOR ANNUAL INSPECTIONS OF ALL BACKFLOW PREVENTION ASSEMBLIES TO VERIFY STILL OPERABLE.
- 1.32 THE CONTRACTOR SHALL FURNISH THREE SETS OF INSTRUCTION MANUALS TO THE OWNER AT COMPLETION OF CONSTRUCTION.

---000---



GENERAL SANITARY RISER NOTES:

1. ALL SANITARY PIPING LESS THAN 3" SHALL BE SLOPED AT 1/4"/1'-0". ALL SANITARY PIPING LARGER THAN 3" BUT LESS THAN 8" SHALL BE AT 1/8"/1'-0". ALL SANITARY PIPING 8" OR LARGER SHALL BE SLOPED AT 1/16"/1'-0" (IN ACCORDANCE WITH THE PLUMBING CODE AND ALL LOCAL REQUIREMENTS).
2. ALL SANITARY PIPING LOCATED BELOW THE FLOOR SLAB SHALL BE NO LESS THAN 2".
3. ALL VENT THROUGH THE ROOF PENETRATIONS (VTR'S) SHALL BE LOCATED NO LESS THEN 30'-0" FROM ALL EXISTING OR NEW OUTSIDE AIR INTAKES. COORDINATE WITH MECHANICAL CONTRACTOR IN THE FIELD.



- NOTES: 1. WATER METER SHALL BE AS REQUIRED BY THE LOCAL WATER AUTHORITY.
2. PROVIDE COPPER PIPING FOR SERVICE ENTRANCE SUPPLY LINE AND ALL PIPING TO POINT INDICATED.
3. THE BOTTOM OF BACKFLOW PREVENTION ASSEMBLY SHALL BE LOCATED BETWEEN 12 AND 30 INCHES FROM THE FINISH FLOOR, AND A MINIMUM OF 18 INCHES FROM ANY WALL.

WATER SERVICE ENTRANCE PIPING DIAGRAM

DESIGNER / BUILDER

ARCO
DESIGN/BUILD
INDUSTRIAL

44 SOUTH BROADWAY, SUITE 1003
WHITE PLAINS, NY 10601
P: 914.821.5535 F: 914.306.8010

ADBI | DESIGN
SERVICES

PROJECT TITLE

**LINCOLN
EQUITIES -
NY-131
BLDG B**
**NY-312 & PUGSLEY
RD, SOUTHEAST, NY
10509**

ARCHITECT

ADBI / DESIGN SERVICES LLC
44 SOUTH BROADWAY, SUITE 1003
WHITE PLAINS, NY 10601

CIVIL ENGINEER

LANGAN ENGINEERING
300 KIMBALL DRIVE
PARSONS PARK, NJ 07054

STRUCTURAL ENGINEER

SMITH ROBERTS AND ASSOCIATES, INC.
6501 BLUFF RD
INDIANAPOLIS, INDIANA 46217

MECHANICAL ENGINEER

NATIONAL DESIGN/BUILD SERVICES
11840 BORMAN DRIVE
ST. LOUIS, MO 63146

ELECTRICAL ENGINEER

FXB ENGINEERING
5 CHRISTY DRIVE, SUITE 307
CHADDS FORD, PA 19317

PLUMBING ENGINEER

MCCARTHY ENGINEERING ASSOCIATES, INC.
2500 E. HIGH STREET, SUITE 630
POTTSTOWN, PA 19464

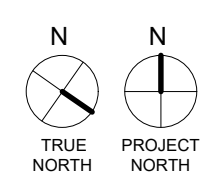
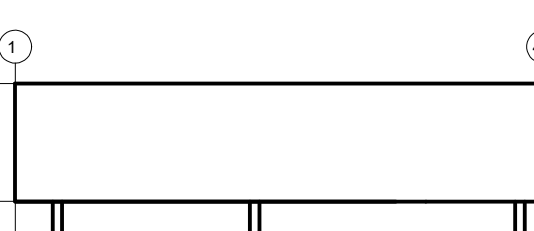
FIRE PROTECTION ENGINEER

S A COMUNALE CO. INC.
2900 NEWPARK DRIVE
BARBERTON, OH 44203

SEAL



KEY PLAN



SUBMITTALS

NO.	DATE	DESCRIPTION
06.10.2022		PERMIT ISSUE

SHEET TITLE

**PLUMBING
DIAGRAMS,
SCHEDULE &
SPECIFICATION**

SHEET NO.

P-3.10